

Finitions translucides (RH-4, RH-2, Delta T-4, Basses B-2 / B-25)



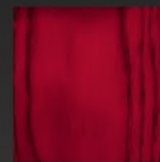
HN= Honey



MV : Misty Violet

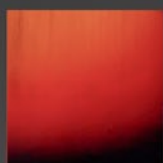


OB: Ocean Blue

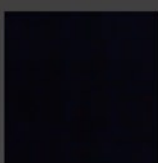


SR: See-Thru Red

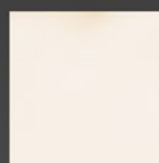
Finitions opaques et sunburst (Texas Pro, Delta Pro, Dayton, X-Fire Series)



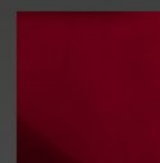
3TS= 3-Tone
Sunburst



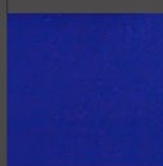
B= Black



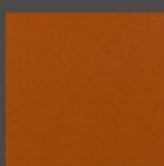
VW= Vintage White



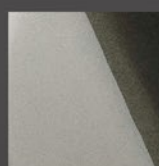
CAR= Candy Apple Red



LPB= Lake Placid
Blue



SC= Sienna Copper



TU= Tungsten



BW= Blinding White

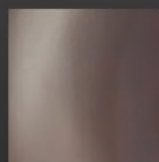
Finitions opaques et translucides modèles Durango



MB= Matte Black



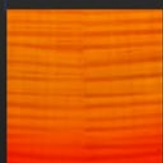
TB= Tungsten Burst



GLD= Gold



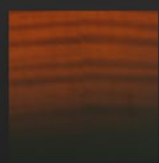
OPB= Open Pore Black



AHB= Antique Honey
Burst



BCB= Black Cherry
Burst



ATB= Antique Tobacco
Burst